

PLEASE CHECK WWW.MOLEX.COM FOR LATEST PART INFORMATION

Part Number: [0351112012](#)
Status: **Active**
Description: 1.78mm (.070") Tab Wire-to-Board TPA™, 5.00mm (.197") Pitch, 20 Circuits

Documents:

[Drawing \(PDF\)](#) [RoHS Certificate of Compliance \(PDF\)](#)
[Product Specification PS-35028-001 \(PDF\)](#)

General

Product Family	Accessories
Series	35111
Component Type	Retainer
Product Name	TPA™ - Term Pos Assurance

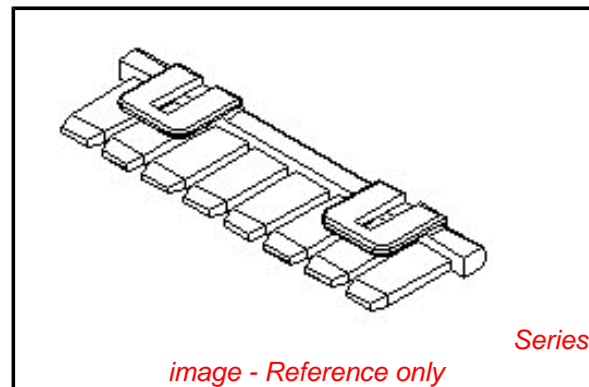
Physical

Circuits (Loaded)	20
Color - Resin	Natural
Lock to Mating Part	Yes
Material - Resin	Nylon
Number of Rows	1
Packaging Type	Bag
Temperature Range - Operating	-40°C to +105°C

Material Info

Reference - Drawing Numbers

Product Specification	PS-35028-001
Sales Drawing	SD-35111-**12



EU RoHS

**ELV and RoHS
Compliant**
**REACH SVHC
Contains SVHC: No**
**Halogen-Free
Status**

China RoHS



**Need more information on product
environmental compliance?**

Email productcompliance@molex.com
 For a multiple part number RoHS Certificate of Compliance, [click here](#)

Please visit the [Contact Us](#) section for any non-product compliance questions.

Search Parts in this Series

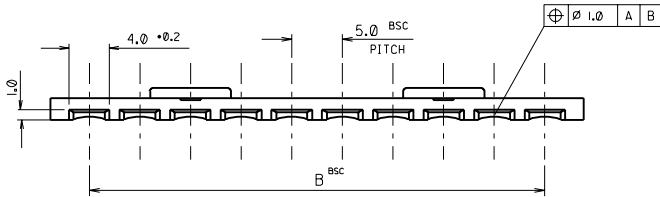
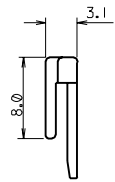
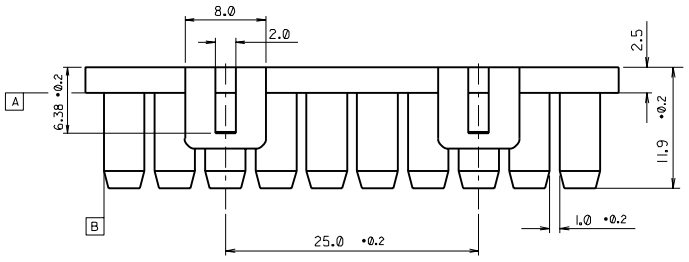
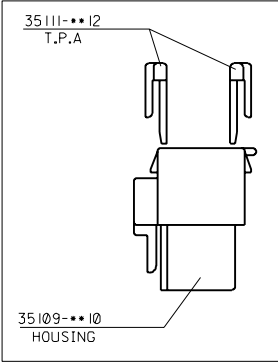
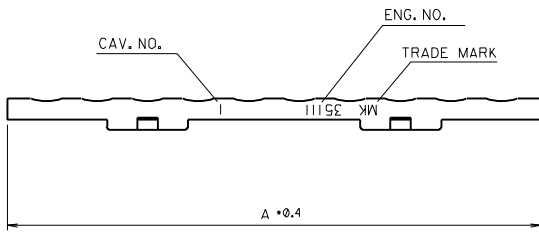
35111Series

Use With

35109 Wire-to-Board Female Housing

DO NOT SCALE DRAWING DIMENSION IN METRIC

PROJECT NO. METER CONN. SIMILAR ITEM EDP NO. 35111-12 ENG. NO. 35111-12



NOTE

- 1. MATERIAL : NYLON 66 UL94V-2
- 2. MATED WITH HOUSING : 35109-10

45.0	52.5	35111-2012	35111-2012	20
35.0	42.5	35111-1612	35111-1612	16
B	A	EDP. NO.	ENG. NO.	CKT.

ASS'Y PART		QTY/REEL OR PACK	SURFACE AREA MM ²	MATERIAL NYLON 66 UL94V-2	WIRE RANGE AWG: — MM ² : —	GENERAL TOLERANCES		MOLEX MOLEX-KOREA CO.,LTD.
DESCRIPTION	ENG. NO.					DIM. : 0.30	ANGLE : 1.0°	
B RELEASED								REVISE ONLY ON CAD SYSTEM
A NEW RELEASED								
1 RELEASED								
0 TEMPORARY RELEASED								
LTR REVISION RECORD								
DR. DATE	DIE FEED	APPL FEED	WBDW	IBDW	APPD BY	CHK'D BY	SCALE	TITLE: METER CONN. FEMALE TPA
ECN	DATE						CAD 3 : 1	INSULATION RANGE
								ENG. NO. SD 35111-12
								REV B